

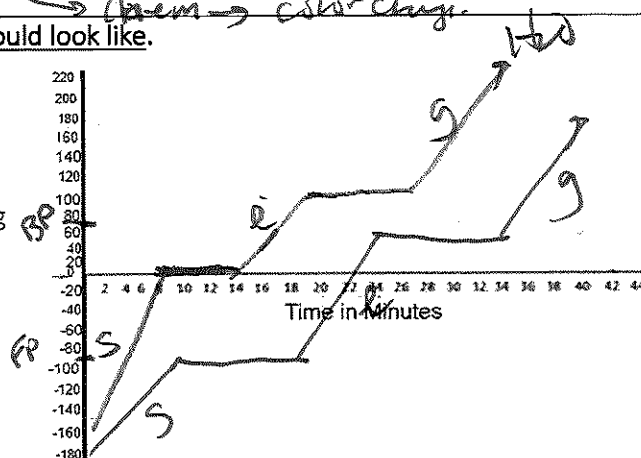
Preliminary Quiz Ticket  
Physical and Chemical Version A

Indicate physical and chemical... and why!

1. Phy Cutting a person's hair No New Substance
2. Phy Water evaporating off a sidewalk. l → g phase change
3. Phy Opening a can of soda releasing gas. No New Substanc.
4. Chem Leaves turning from green to brown during fall. color change
5. Phy/chem Cooking a hotdog over a campfire. Phy - warms  
chem → color change

Draw a sketch of what a phase change diagram of methanol would look like.

- Boiling point is 64.7°C
- Melting point is -97.6°C
- Label all phase changes and phases: solid, gas, liquid, condensing, melting, freezing, evaporating
  - Make sure to provide an arrow pointing in the correct direction for the phase changes.
- Label melting, boiling, & freezing point.



Preliminary Quiz Ticket  
Physical and Chemical Version B

1. Chem Mixing clear lead (II) nitrate with clear potassium Iodide forming a new yellow substance. color change
2. Burning of gas in your automobile on the way to school. Chem - gas evolution + heat
3. Campfire. heat + gases - Chemical
4. Sharpening a pencil. Physical - Phy manipulation
5. Formation of a liquid on your mirror during a morning shower. Phy. → Phase change

6. On the heating curve above, draw out the heating curve for water. Use a different color.